



# Flexible and adaptable: **plug & produce with MTP**

Modular production, fast retrofits, minimum downtime:  
RETEL Neuhausen AG implements scalable MTP solutions  
for your flexible process automation.

## Your benefits at a glance

### Modular and integrated

- Greater flexibility and modularity thanks to MTP; can adapt rapidly to your processes
- Scalable from individual plant to production line
- Standardised interfaces
- Universal solution from lab to production

### Efficiency and investment protection

- We are – or can complement – your automation department
- Individual service or partner as general contractor
- Optimal system support throughout the entire lifecycle
- Manufacturer-independent automation solution

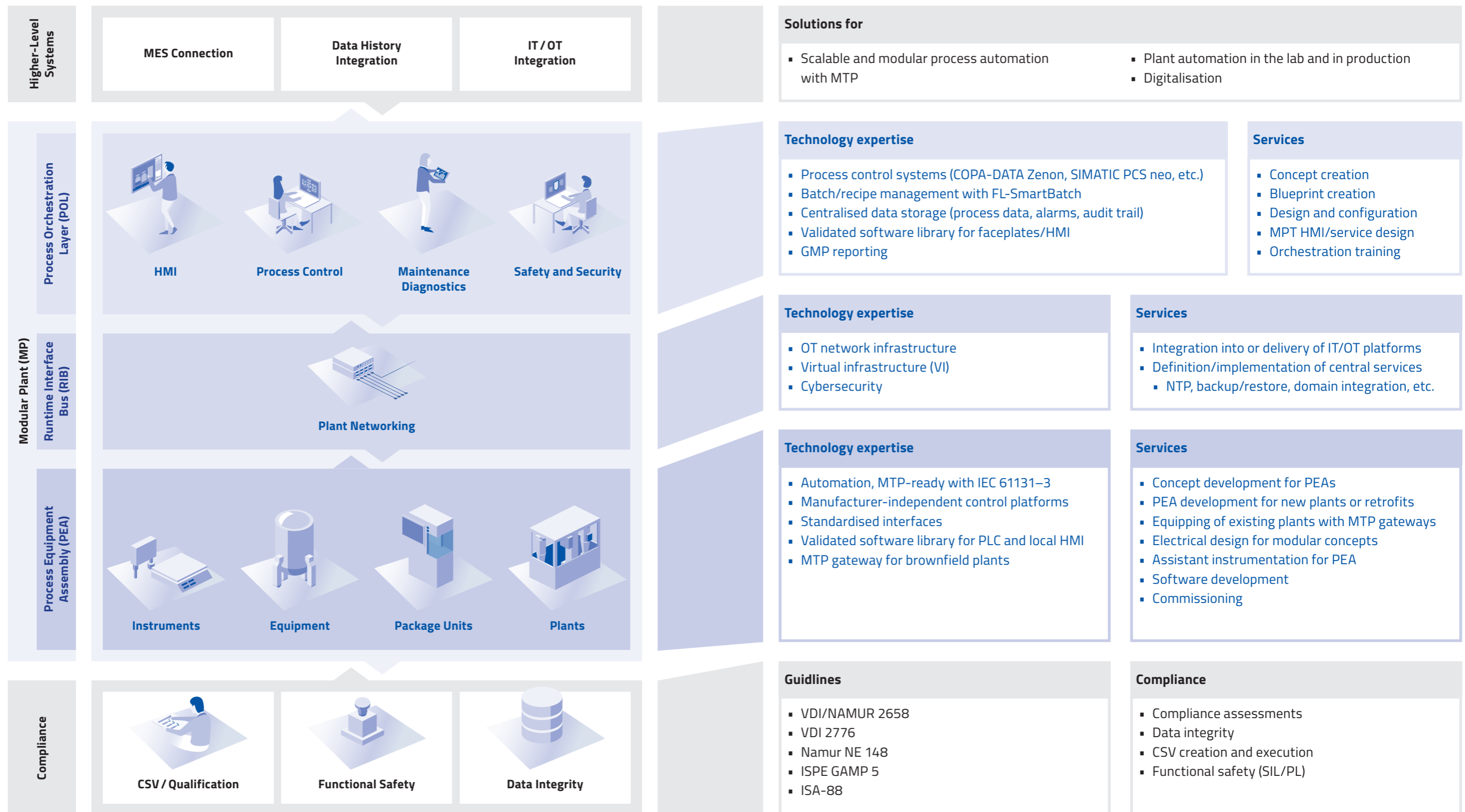
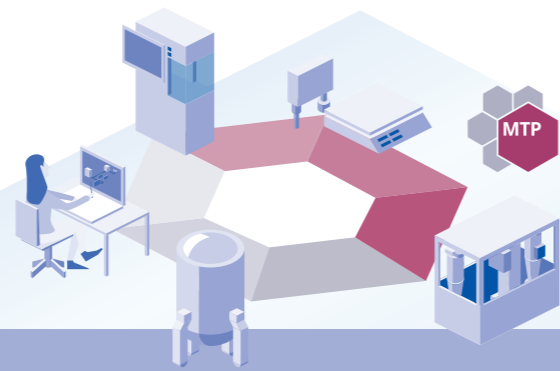
### Compliance

- Software setup with GAMP-validated software library
- Assurance and fulfilment of compliance requirements (GMP, GAMP, data integrity)

### Abbreviations

<b>MTP</b>	Module Type Package
<b>POL</b>	Process Orchestration Layer
<b>RIB</b>	Runtime Interface Bus
<b>PEA</b>	Process Equipment Assembly
<b>MES</b>	Management Execution System





## MTP for WinCC SCADA

- Enjoy the benefits of MTP – even without a process orchestration layer (POL)
- FactoryLayer's innovative solutions make it easy to integrate your process equipment assemblies (PEAs) into WinCC SCADA, thereby allowing you to benefit from modular automation without the need for complex infrastructure.
- Batch operation made easy – with FL-SmartBatch
- FL-SmartBatch also provides you with an intuitive, transparent and MTP-compatible powerful option for controlling your equipment in batch mode.

## RETEL as a partner ...

### for modular process automation with MTP

- POL/process control system
- RIB/OT network infrastructure
- PEA automation (greenfield/ brownfield)
- MTP gateway
- FL-SmartBatch/batch management without process control system
- FL-Process Library/validated standard software library for PEA and SCADA
- And more

### for the end customer

- We create the infrastructure for orchestration in the POL
- We network and digitalise your equipment
- We supply partial or complete plants systems with our plant partner or yours
- You have a reliable partner throughout the entire life cycle (after-sales)
- We guarantee compliance in the areas of GMP and functional safety
- Brownfield integration with a tailor-made concept

### for plant manufacturers

- We are your automation partner with comprehensive knowledge in the field of modular process automation
- We are a reliable partners
- We support you with integration for the end customer with comprehensive expertise
- We make your plant MTP-ready



Fit for Pharma 4.0 – with plug & produce!  
RETEL Neuhausen AG drives your project forward:  
modular, digital, compliant.  
You can rely on our many years of experience  
in process automation.